



**CFCC Library/Learning Resources**  
*library.cf.edu*



3001 S.W. College Rd  
Ocala, FL 34474  
352/854-2322  
Library Circulation Desk  
x1344 or x1544

**REFERENCE databases  
through LINCCWeb**  
**www.linccweb.org**

**REFERENCE SHELF**

**Academic Search Complete** **FULL TEXT**

Designed specifically for academic institutions, this is the world's largest scholarly, multi-disciplinary database, containing full text for 5,300 periodicals, including 4,400 peer-reviewed journals. Updated daily.

**CredoReference** **FULL TEXT**

220 online full-text reference books, covering art, languages, business, food, geography, literature, music, philosophy, psychology, science, and social sciences, as well as providing dictionaries, encyclopedias, and collections of quotations.

**Digital Collection** **FULL TEXT**

Provides reference, academic and general interest e-books from Praeger, Greenwood Press, and Libraries Unlimited.

**Funk & Wagnalls New World Encyclopedia** **FULL TEXT**

Contains over 25,000 records, covering a wide range of topics.

**GPO via FirstSearch**

500,000 records published by the Government Publications Office since 1976.

**Oxford English Dictionary** **FULL TEXT**

Online version of the complete text of the Oxford English Dictionary's twenty-volume Second Edition and three-volume Additions Series. Updated quarterly.

**ProceedingsFirst via FirstSearch**

Provides tables of contents of papers presented at conferences worldwide.

**Testing & Education Reference Center** **FULL TEXT**

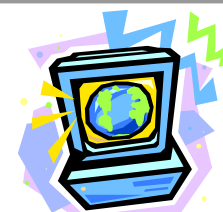
Helps prepare students for tests for college, graduate school, the military or trade school and includes tests from the GED to the GRE as well as providing information on distance education, two-year, undergraduate and graduate programs.

**World Almanac via FirstSearch** **FULL TEXT**

Includes the full text of all of the current Almanac titles.

**WorldCat via FirstSearch**

The world's most comprehensive bibliography, used to place InterLibrary Loan requests for books not available through LINCCWeb.



**DATABASES**

These databases provide the full text of articles that were originally published in magazines, journals, and newspapers.

They are available to currently enrolled Florida community college students.



**GETTING THERE**

Go to LINCCWeb at **www.linccweb.org**. Click **Search a Specific Database**, then:

- ◆ Pick **Central Florida Community College**
- ◆ Enter your 9-digit **Borrower ID** and your **PIN** (last 4 digits of your ID)
- ◆ At the next screen, select **Reference**
- ◆ Select a database
- ◆ Click **Connect**



**REFERENCE databases  
through LINCCWeb**  
**www.linccweb.org**

**LINCCWEB DATABASES**

There are 80+ LINCCWeb databases, most of which provide the full text of at least some of the articles indexed in the database. "Full text" means that you can view the complete article, not just information about the article. You can also, in most databases, print articles, save them to flash drive, or email them.

The full-text articles that you access through the LINCCWeb databases are the exact same articles that were published in the original print version of the magazine or journal or newspaper or reference book, so that is how they are categorized for research papers. LINCCWeb articles are not web sites; they are magazine or journal articles or reference book essays.

Not every database provides full-text articles, so it's important to choose a database that does provide full-text if you need the actual articles. In the list of databases, the ones that provide actual articles say **Full Text** next to the title. In addition, usually not every record, even in a full text database, is attached to a full text article. If you need articles, most databases offer the option of limiting your search to Full Text. This is generally a good idea.

**CITING ONLINE ARTICLES**

**MLA STYLE**

"Jaunty." Word Histories and Mysteries. 2004. CredoReference. LINCCWeb. Central Florida Community Coll. Lib., Ocala. 20 Nov. 2007 <<http://www.linccweb.org>>.

"Puh-leeze." Oxford UP, 2007. Oxford English Dictionary. Oxford UP on LINCCWeb. Central Florida Community Coll. Lib., Ocala. 20 Nov. 2007 <<http://www.linccweb.org>>.

"Top 10 Interview Mistakes." Gale Group, 2007. Testing & Education Reference Center. Gale on LINCCWeb. Central Florida Community Coll. Lib., Ocala. 20 Nov. 2007 <<http://www.linccweb.org>>.

**APA STYLE**

Jaunty. (2004). In *Word Histories and Mysteries*. Retrieved November 20, 2007, from CredoReference via LINCCWeb: <http://www.linccweb.org>

Puh-leeze. (2007). Oxford UP. Retrieved November 20, 2007, from Oxford English Dictionary via LINCCWeb: <http://www.linccweb.org>

Top 10 interview mistakes. (2007). Gale Group. Retrieved November 20, 2007, from Testing & Education Reference Center via LINCCWeb: <http://www.linccweb.org>



**NEED HELP?**

**Call a CFCC Librarian!**  
**352/854-2322**  
**x1345**

Or the CFCC Librarians can be contacted by email at:

**library@cf.edu**

**Fall and Spring hours:**  
Mon-Thu 7:30 am-9 pm  
Fri 7:30 am-4:30 pm  
Sat 10 am-5 pm

**Summer hours:**  
Mon-Thu 7:30 am-8 pm

For more information, visit the CFCC Library web page at

**library.cf.edu**

Online reference help is also available through **Ask-A-Librarian** at

**www.askalibrarian.org**

